

# HYUNDAI COMPOSITE® DRY VAN



 **HYUNDAI TRANSLEAD**

# Durability Longevity Capacity



## Manufacturing & Materials

State-of-the-art manufacturing and ongoing investments in engineering and materials deliver stronger and lighter dry vans that improve efficiency and reduce costs.

- Automatic floor and semi-automatic wall assembly
- Onsite water testing
- 99% First pass QC acceptance rate
- Backed by Hyundai Translead



## Increased Freight Capacity

Thinner walls and less trailer weight allow more freight capacity with every load, increasing revenue and reducing fuel costs and emissions.

- More freight weight per load
- Reduced fuel cost
- Reduced carbon emissions per mile



## Hot-Dipped Galvanization

Hyundai Translead offers an Anti-Corrosion Package, with hot-dipped galvanization as a standard feature.

- In-house galvanization ensures quality control
- Protects from winter road chemicals, magnesium and calcium chloride
- Less maintenance and extended life

**5x**  
Longer  
Life

**6x\***  
Stronger  
Alloy  
Bonding

\*versus zinc-rich paint

Hyundai Translead offers high-quality products with innovative engineering and manufacturing. The Composite Dry Van with L-Core panels allow greater efficiency and durability for increased product longevity.



### Durability

Structure and surfaces are strengthened and protected against everyday use, including damage from loading, unloading, and carrying freight.

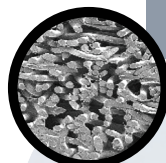
- Enhanced structural integrity
- Protected corners and impact zones
- Snag-free interiors reduce wear
- Interchangeable panels for easy repair and replacement
- IIHS ToughGuard-awarded RIG-30L bumper



### Longevity

Dry van trailers are built for longer service and use, while reducing total cost of ownership with longevity-focused features.

- Hot-dipped galvanized for greater protection
- Supplemental sealant added to floorboard joints improves seal
- Industry-best warranty



**3.5x stronger**

### L-Core Panels

The optional L-Core Panels from Hyundai Translead are all about the core. These panels improve upon the standard foam core with a polymer core that is 3.5x stronger, while dramatically reducing weight with a thinner galvanized steel skin layer. With greater heat resistance and rigidity, these panels are more durable.



### Efficiency & Savings

Hyundai Translead's Composite Dry Van with L-Core panels lead the industry in efficiency and cost savings.

### Weight Savings

**420 lbs\***

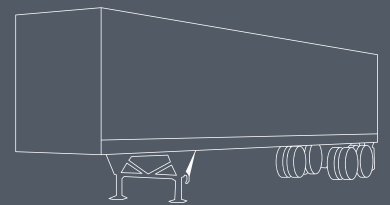
\* versus other composite panels





## Learn more about the Composite® Dry Van

Visit [hyundaitranslead.com/product/dry-van/composite/](https://hyundaitranslead.com/product/dry-van/composite/)



Original®



HY-Cube®



Composite®



Composite XT®

The Composite is part of Hyundai Translead's industry-leading line of Dry Van Trailers. See all of these best-selling trailers at [hyundaitranslead.com](https://hyundaitranslead.com).

## Backed by Hyundai Translead

Hyundai Translead surrounds customers with high-value products, services and care, and empowering them with knowledge, insight and control synchronized to the speed of their business.

